

SOLMAZER

elik kep ■ elik dirsek ■ sanayi



www.solmazermakine.com

SOLMAZER



Establishment
2008

About Us

Solmazer Makine, located in Kocaeli, Turkey, specializes in the manufacturing of steel and copper caps, elbows, sleeves, and various other precision fittings materials. The dimensions of the fitting materials vary according to customer's demands.

Also Solmazer Makine, dedicated to precision machining and utilize advanced CNC Lathe and CNC Vertical Machining Center technologies.

Solmazer Makine is a reliable supplier of these materials to a wide array of businesses. Additionally, Solmazer Makine maintains a robust international presence, exporting our products to clients in Poland, Brazil, India, Germany, Greece, and Italy.

As Solmazer Makine, we have forged enduring partnerships with our stakeholders and employees over the years, grounding them in shared values that have brought us to where we stand today. We firmly believe that our commitment to ethical principles, in conjunction with our business acumen, has played a pivotal role in our success. Through the judicious utilization of time and unwavering commitment to our commitments, the companies we collaborate with have become our most significant references.

STEEL ELBOW

A steel elbow in the context of water-cooled panels in the steel industry is a critical component that facilitates the proper routing of cooling water within the system, contributing to effective thermal management and system longevity.



Steel Elbow Dimensions
Ø60mm - 90mm



STEEL CAP

These are components of water-cooled panels that are used to manage and protect against high temperatures. Water-cooled panels are often used in steelmaking to absorb and dissipate heat generated during the process. The "steel cap" refers to a steel component that is part of the water-cooled system. It might act as a protective cover or a reinforcing element in the panel system to ensure durability and effectiveness in cooling.

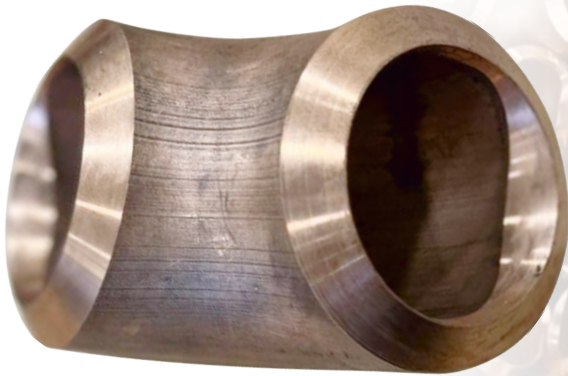


Steel Cap Dimensions
Ø38mm - 114mm



COPPER ELBOW

A copper elbow, in the context of water-cooled panels is a critical component used to manage the flow of coolant within the system, ensuring efficient heat dissipation and protecting the integrity of the cooling infrastructure



Copper Elbow Dimensions
Ø60mm - 90mm

COPPER CAP

"Copper cap" refers to a component made of copper that is used to cover or enclose a specific area or part of the panel. Copper is often chosen for its excellent thermal conductivity, which allows for efficient heat transfer. The copper cap helps to enhance the cooling performance of the water cooled panel by facilitating the dissipation of heat from the enclosed area.

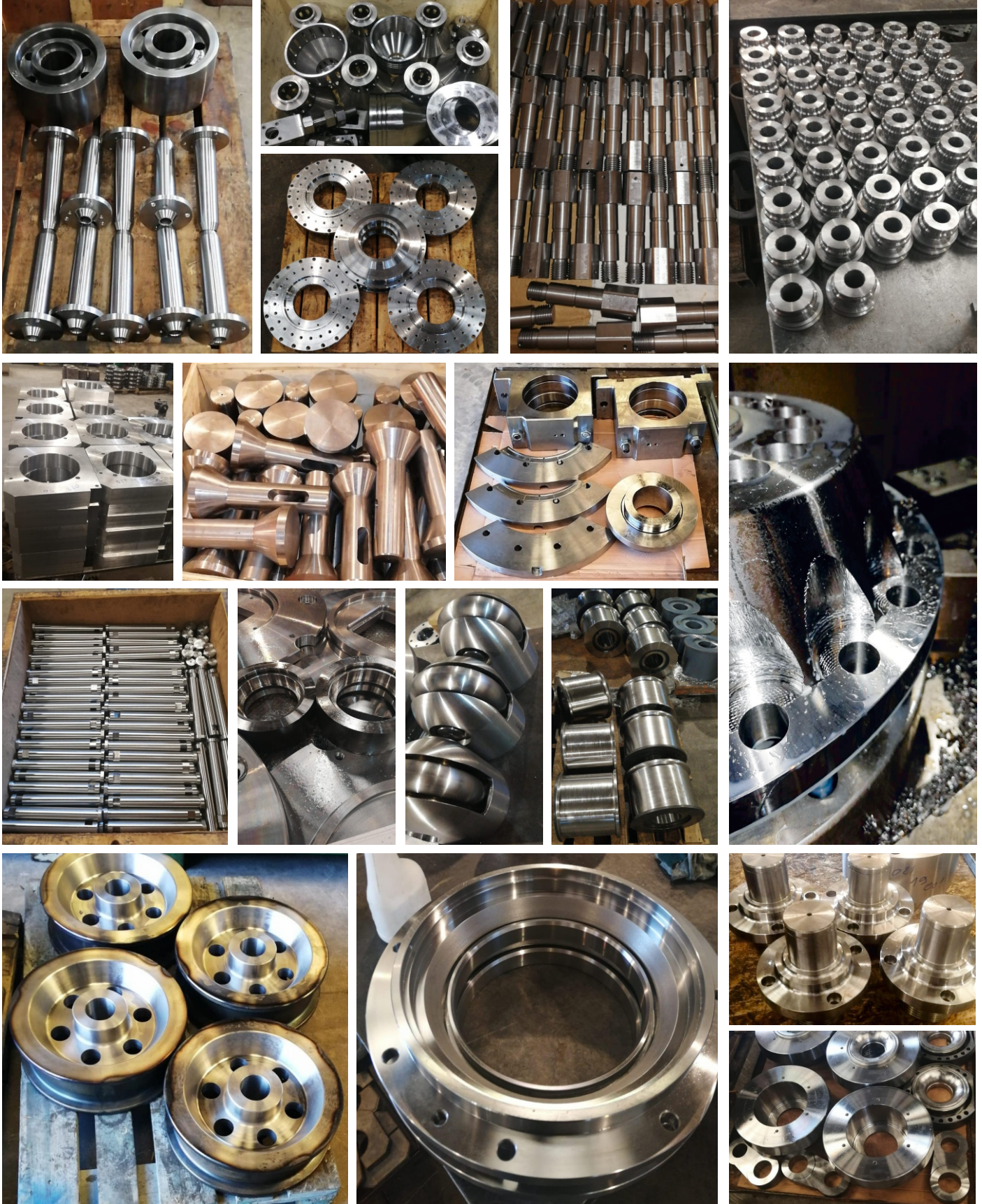


Copper Cap Dimensions
Ø38mm - 114mm

SOLMAZER

MACHINING WITH OUR CNC ROUTER AND CNC VERTICAL MACHINES

Supported by our commitment to precision craftsmanship ; Solmazer Makine, specialize in precision machining with CNC vertical milling and CNC turning machines.



Machining with our Cnc Router and Cnc Vertical Machines

Supported by our commitment to precision craftsmanship ; Solmazer Makine,
specialize in precision machining with CNC vertical milling and CNC turning machines.



Sanayi Mh. D130 Karayolu Cd. No:211
İzmit / Kocaeli / Turkey



+90 262 335 54 17
+90 532 411 62 43



solmazerinsaat@gmail.com
solmazermakine@gmail.com
info@solmazermakine.com